



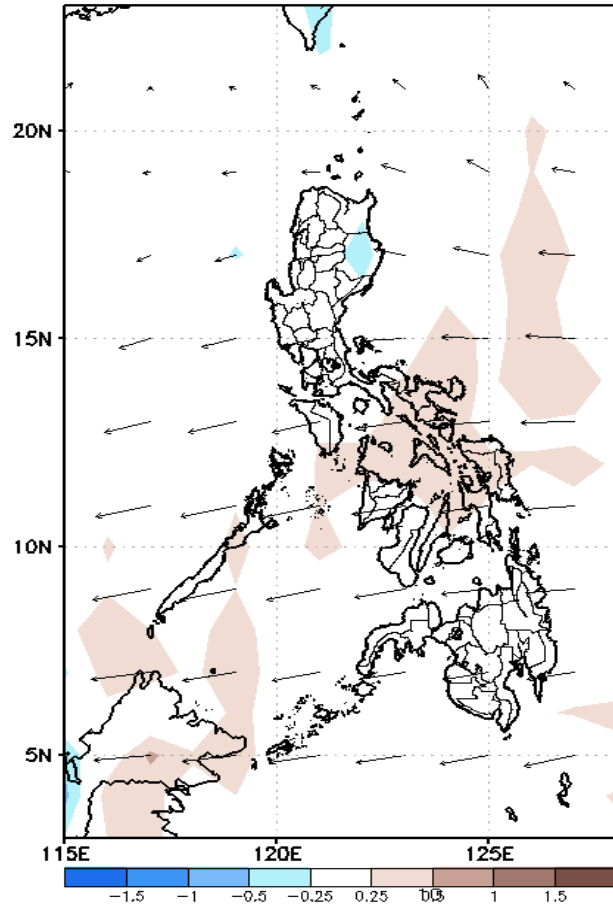
Week 1 & Week 2 Forecast for the Philippines using GEFS Model



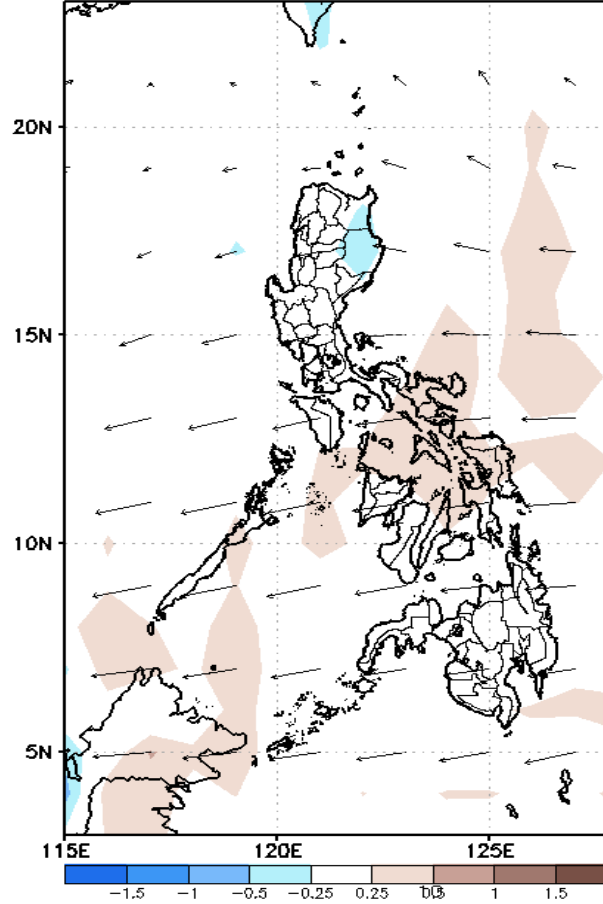
GEFS Week-1 Forecasts: Divergence & Wind Anomaly

Week 1: Aug 12-18, 2021

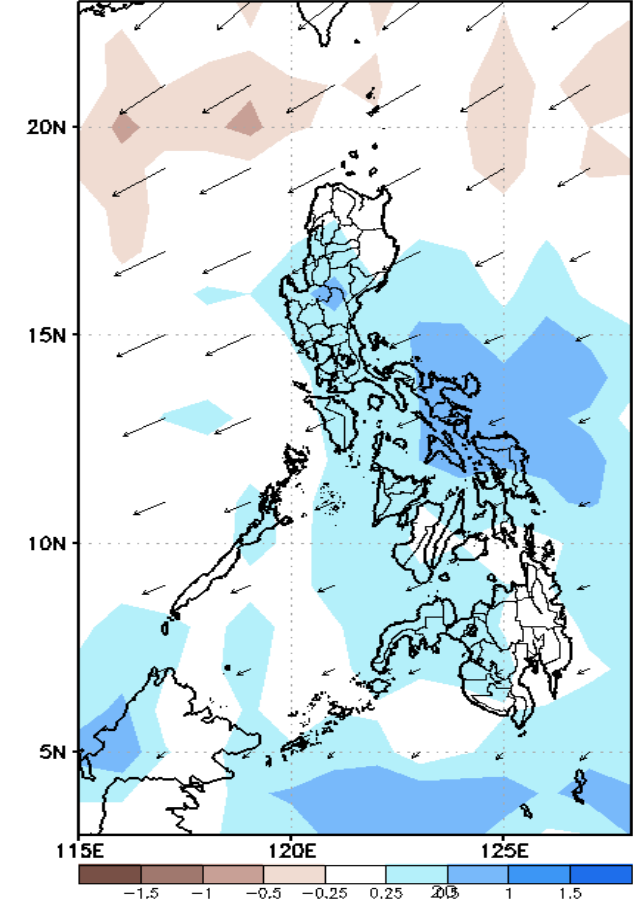
GEFS Week-1 850-hPa Divergence and Wind Anom
Valid: 20210812 - 20210818



GEFS Week-1 700-hPa Divergence and Wind Anom
Valid: 20210812 - 20210818



GEFS Week-1 200-hPa Divergence and Wind Anom
Valid: 20210812 - 20210818

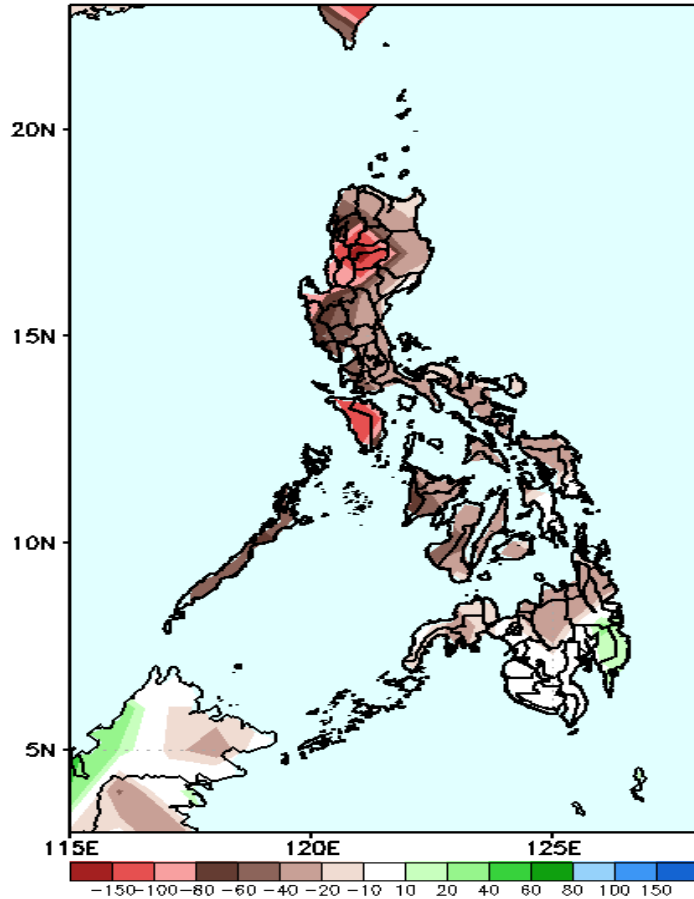


Upper and low level Divergence suggest likelihood of precipitation most parts of the country(except Ilocos Norte, Apayao, Cagayan, Isabela, CARAGA and Davao Region). Easterlies affecting most parts of the country. Attributing to light to moderate rains due to thunderstorms during the forecast period.

Precipitation Anomaly and Exceedance Probability > 25/50 mm

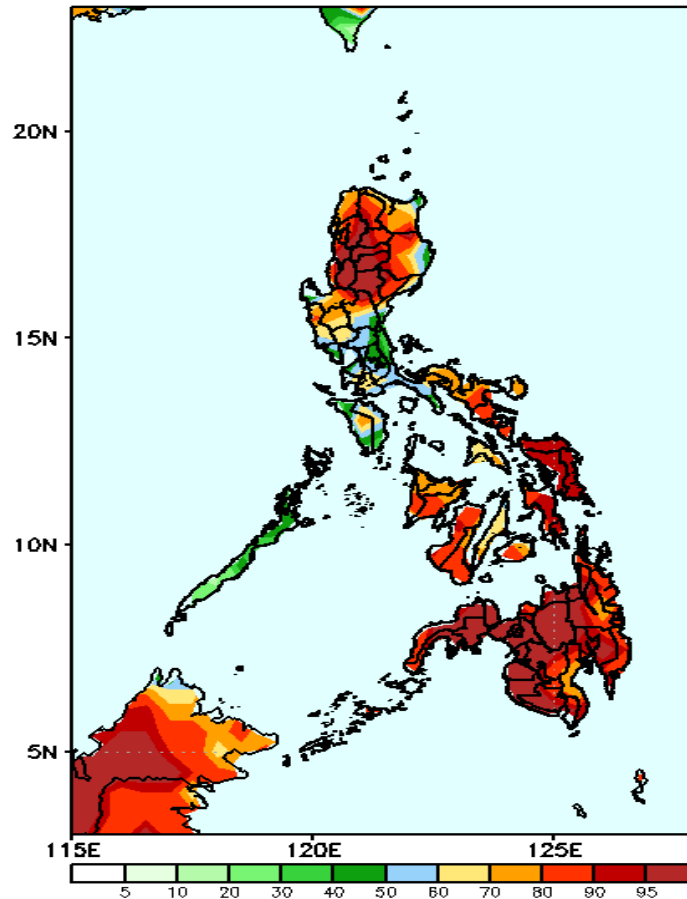
Week 1: Aug 12-18, 2021

GEFS Week-1 Precip Anomaly
Valid: 20210812 - 20210818



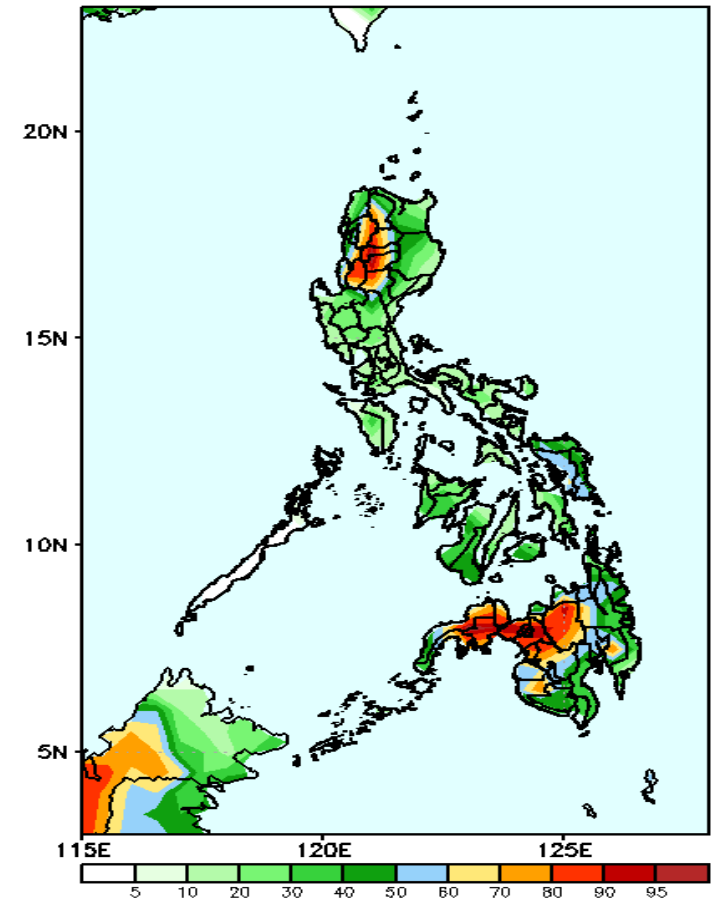
Rainfall deficit of 40-150mm is expected in most parts of the country (especially in Cordillera & Ilocos Region and Mindoro) during the forecast period.

GEFS Week-1 Exceedance Prob. > 25mm
Valid: 20210812 - 20210818



High probability of rainfall to exceed 25mm in most parts of the country is expected during the forecast period.

GEFS Week-1 Exceedance Prob. > 50mm
Valid: 20210812 - 20210818

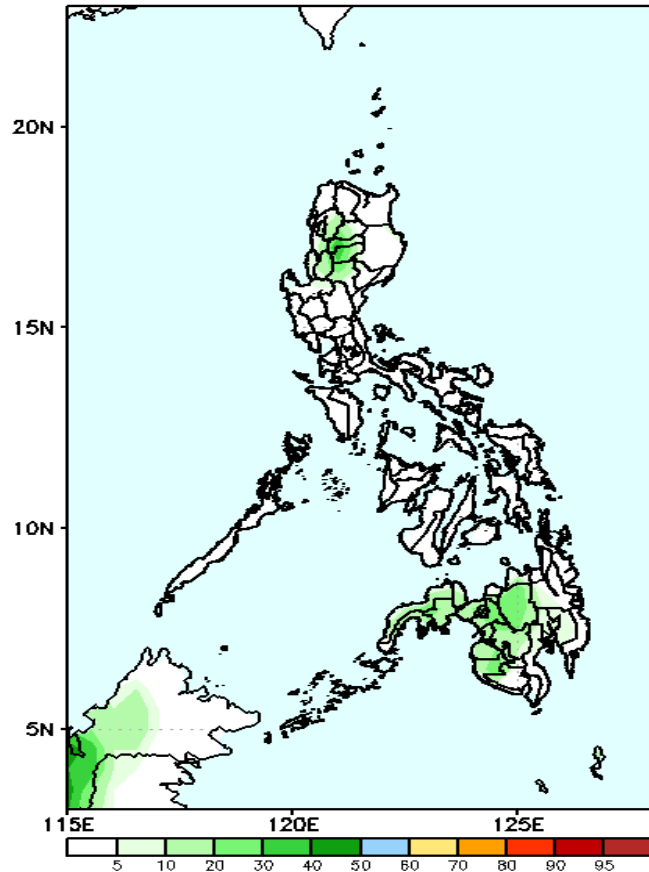


High probability of rainfall to exceed 50mm in Cordillera Region, Northern Mindanao and Zamboanga Peninsula while less likely for the rest of the country during the forecast period.

Exceedance Probability > 100/150/200 mm

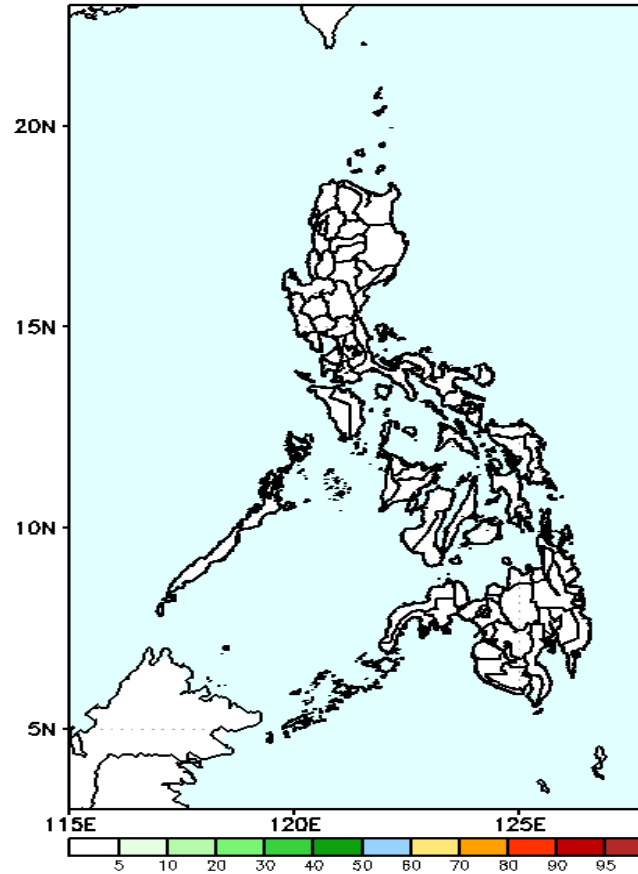
Week 1: Aug 12-18, 2021

GEFS Week-1 Exceedance Prob. > 100mm
Valid: 20210812 - 20210818



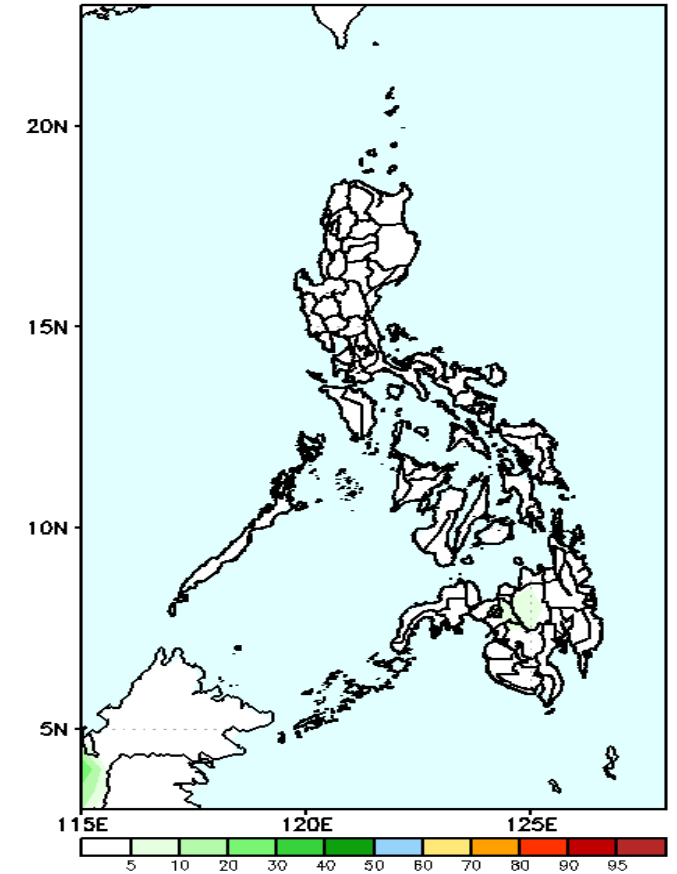
Less probability of rainfall to exceed 100mm in most parts of the country is expected during the forecast period.

GEFS Week-1 Exceedance Prob. > 200mm
Valid: 20210812 - 20210818



Less probability of rainfall to exceed 200mm in most parts of the country is expected during the forecast period.

GEFS Week-1 Exceedance Prob. > 150mm
Valid: 20210812 - 20210818



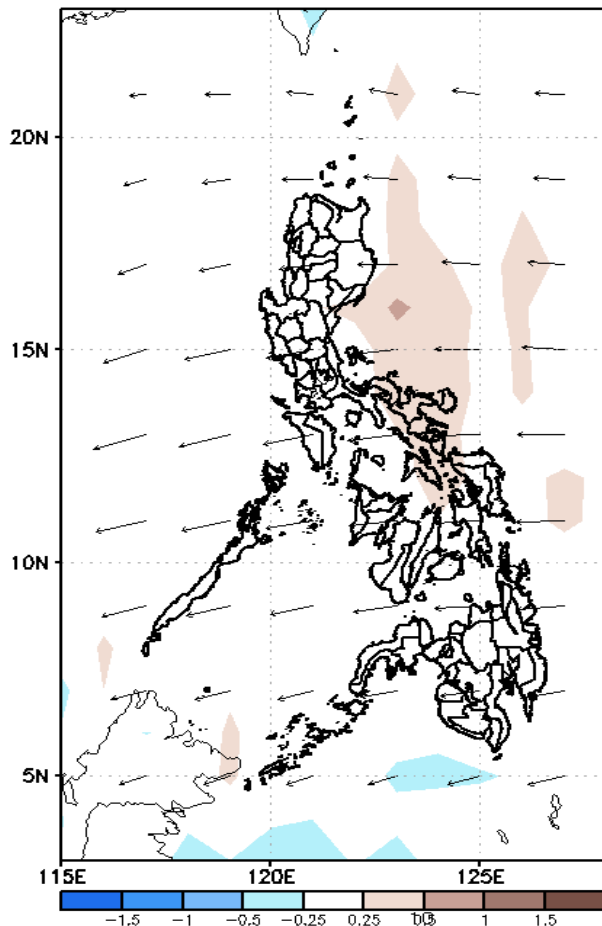
Less probability of rainfall to exceed 200mm in most parts of the country is expected during the forecast period.



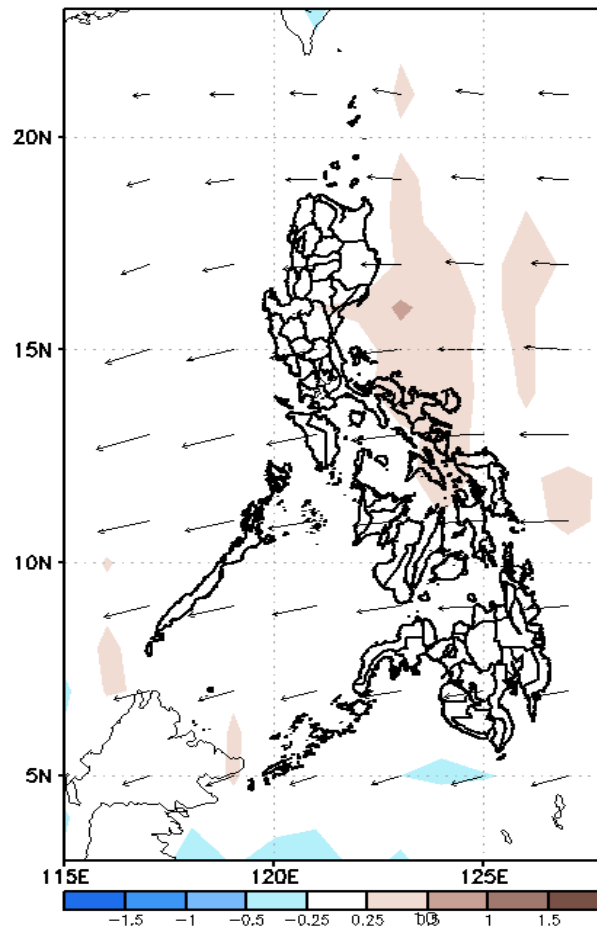
GEFS Week-2 Forecasts: Divergence & Wind Anomaly

Week 2: Aug 19-25, 2021

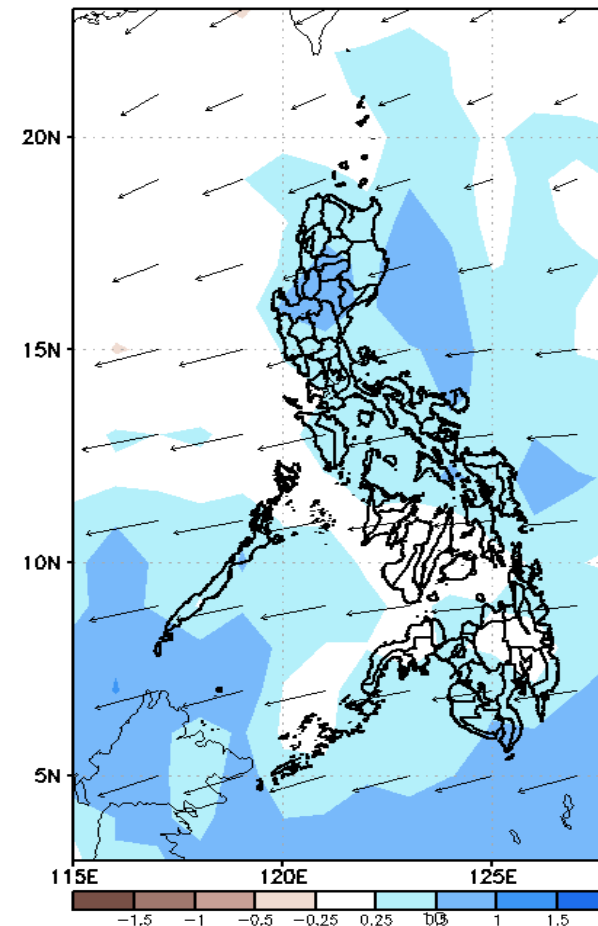
GEFS Week-2 850-hPa Divergence and Wind Anom
Valid: 20210819 - 20210825



GEFS Week-2 700-hPa Divergence and Wind Anom
Valid: 20210819 - 20210825



GEFS week-2 200-hPa Divergence and Wind Anom
Valid: 20210819 - 20210825



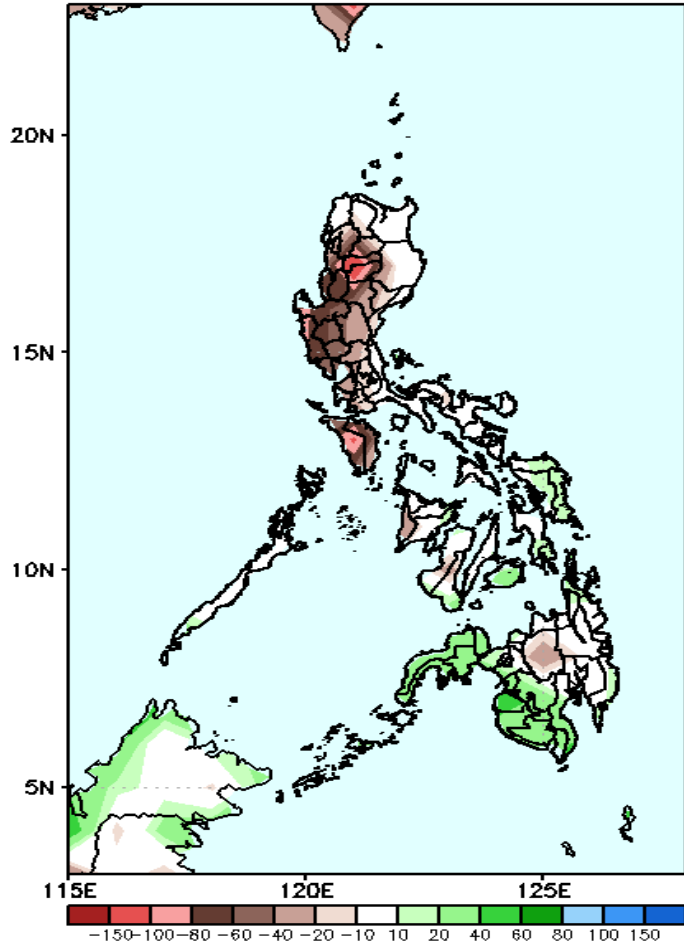
Upper and low level Divergence suggest likelihood of precipitation most parts of the country. Easterlies affecting most parts of the country. Attributing to light to moderate rains due to thunderstorms during the forecast period.



Precipitation Anomaly and Exceedance Probability > 25/50 mm

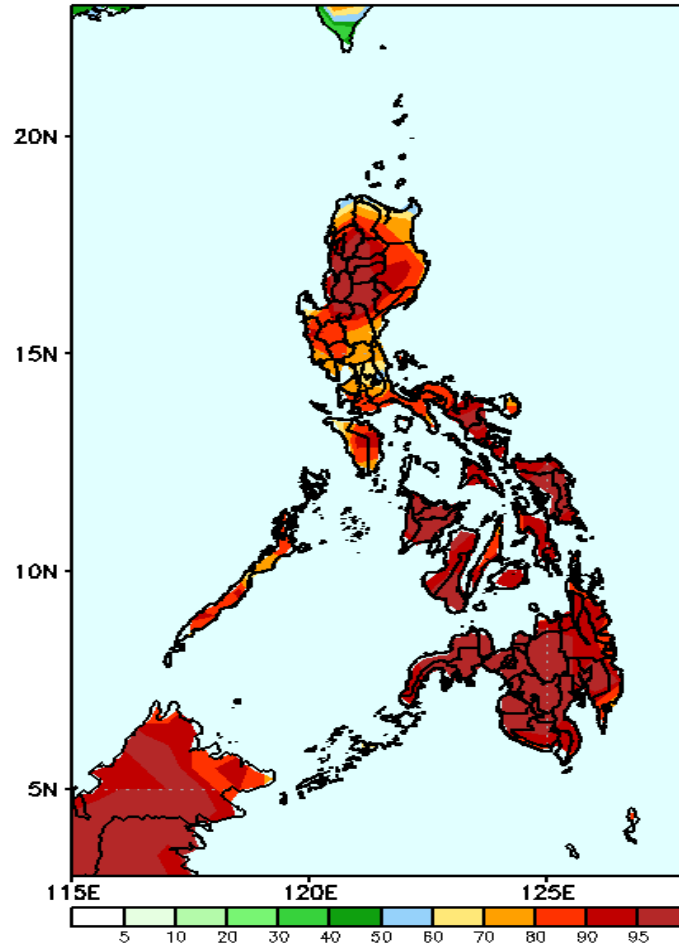
Week 2: Aug 19-25, 2021

GEFS Week-2 Precip Anomaly
Valid: 20210819 - 20210825



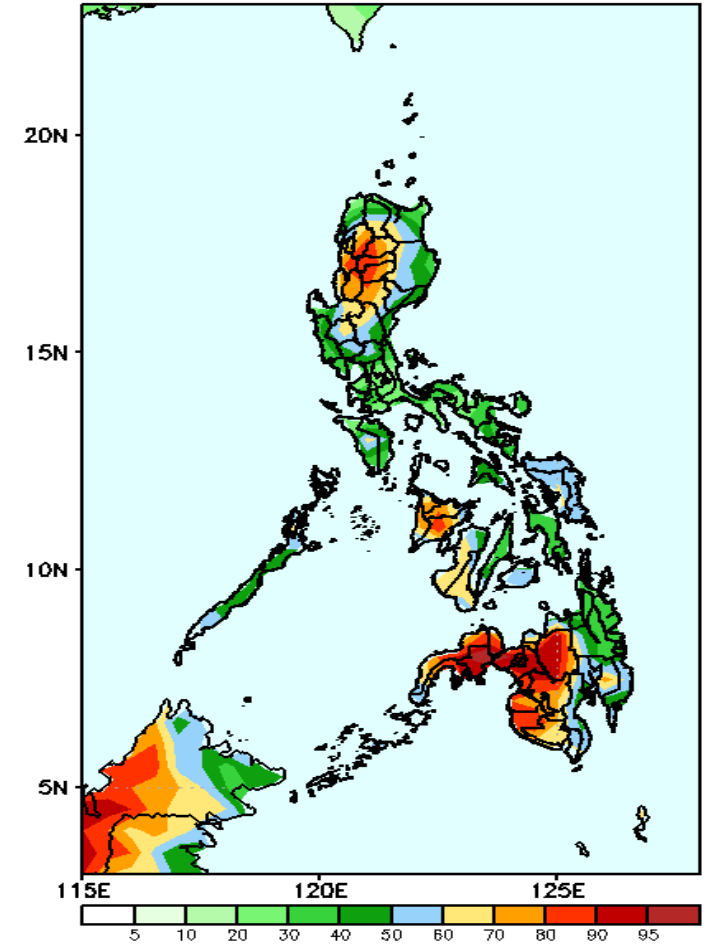
Rainfall deficit of 40-150mm is expected in most parts of Luzon while 40-80 mm increase of rainfall in Eastern Visayas, Bohol and western Mindanao during the forecast period.

GEFS Week-2 Exceedance Prob. > 25mm
Valid: 20210819 - 20210825



High probability of rainfall to exceed 25mm in most parts of the country is expected during the forecast period

GEFS Week-2 Exceedance Prob. > 50mm
Valid: 20210819 - 20210825

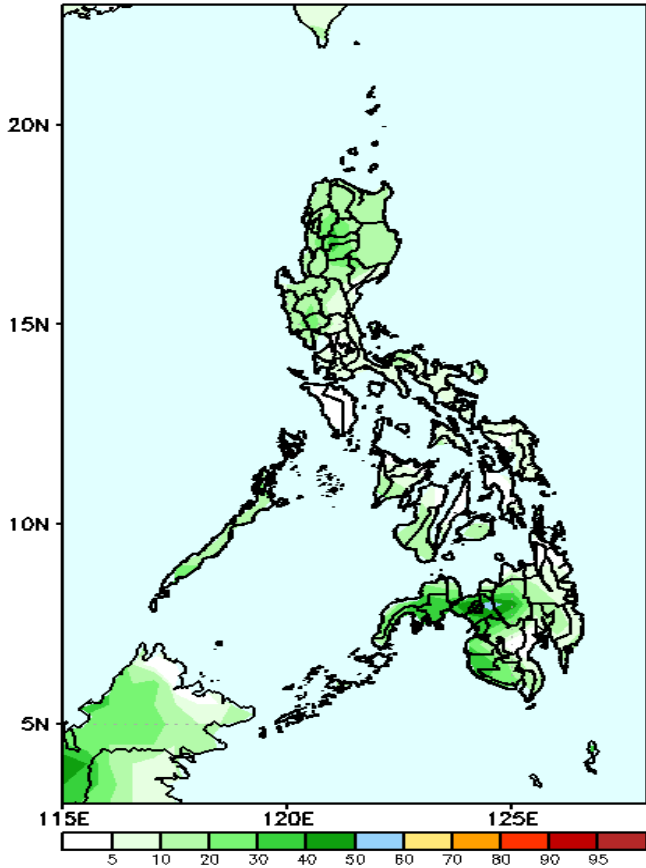


High probability of rainfall to exceed 50mm in Ilocos & Cordillera Region, western parts of Visayas & Mindanao (including Bukidnon) while less likely for the rest of the country during the forecast period.

Exceedance Probability > 100/150/200 mm

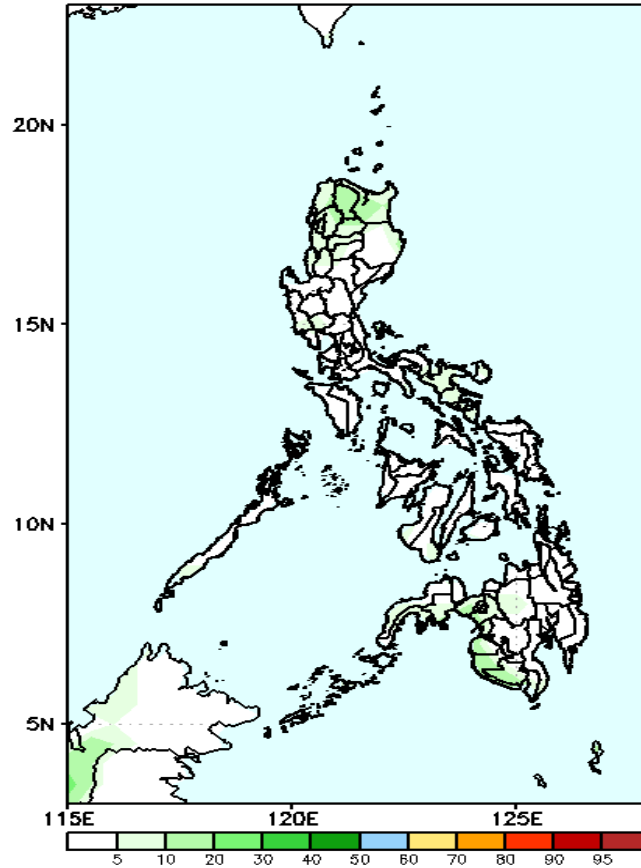
Week 2: Aug 19-25, 2021

GEFS Week-2 Exceedance Prob. > 100mm
Valid: 20210819 - 20210825



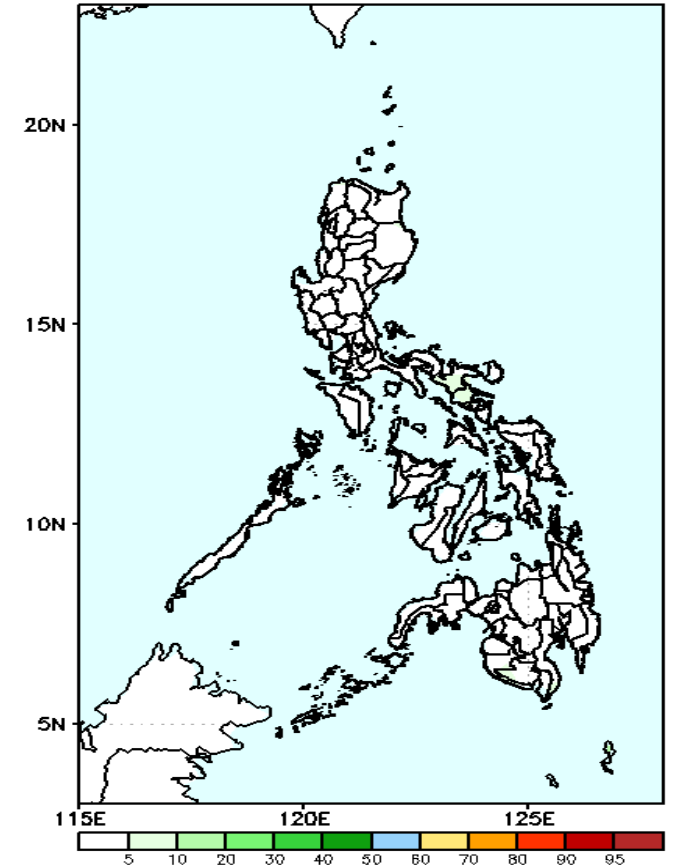
Less probability of rainfall to exceed 100mm in most parts of the country is expected during the forecast period.

GEFS Week-2 Exceedance Prob. > 150mm
Valid: 20210819 - 20210825



Less probability of rainfall to exceed 150mm in most parts of the country is expected during the forecast period.

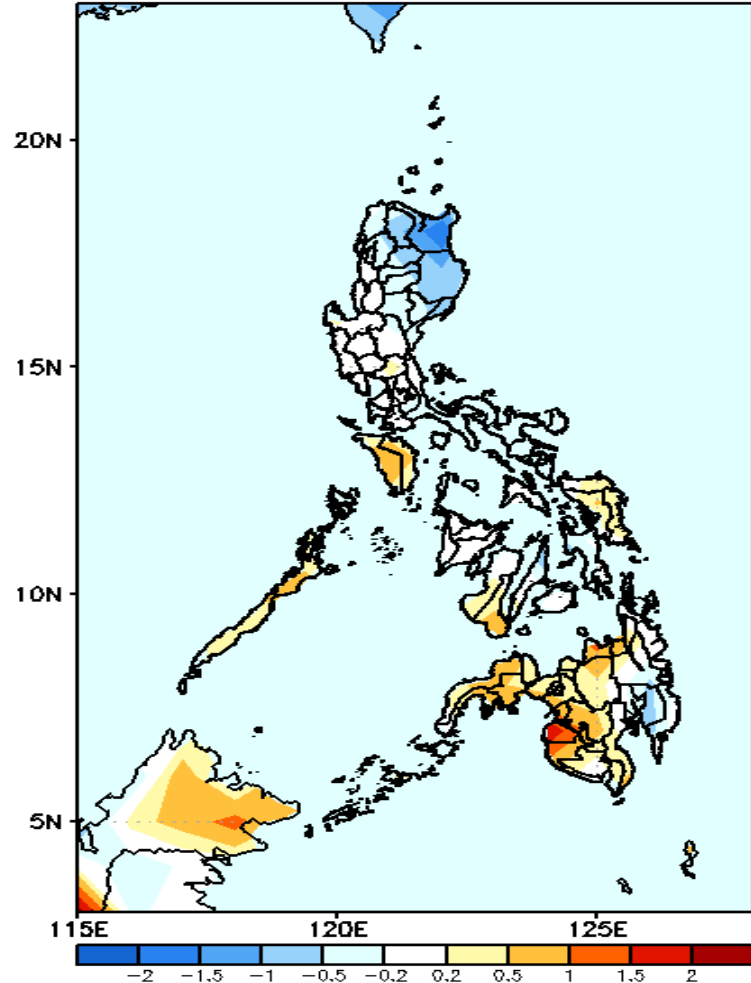
GEFS Week-2 Exceedance Prob. > 200mm
Valid: 20210819 - 20210825



Less probability of rainfall to exceed 200mm in most parts of the country is expected during the forecast period.

GEFS Week-1 & 2 Forecasts: T2m Anomaly

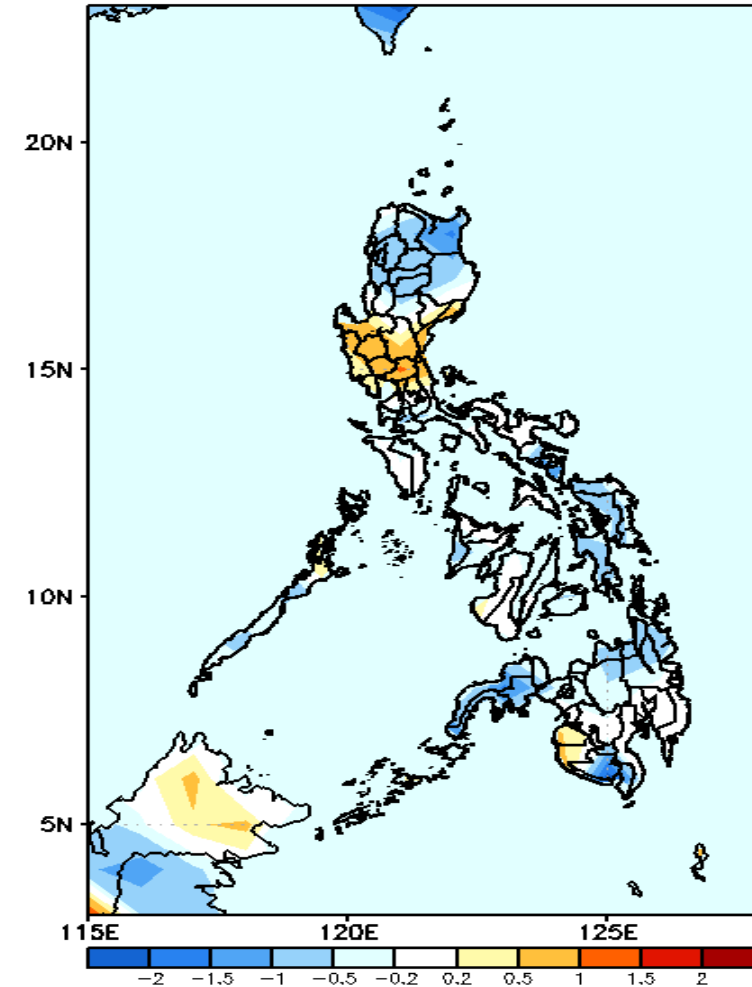
GEFS Week-1 T2m Anomaly
Valid: 20210812 - 20210818



2m Temperature Week 1: Aug 12-18, 2021

Slightly cooler to cooler than average surface air temperature will likely experience in northeaster Luzon and Davao de Oro while slightly warmer to warmer than average temperature in Mindoro, Eastern Samar, Negros Oriental and most parts of Mindanao.

GEFS Week-2 T2m Anomaly
Valid: 20210819 - 20210825



2m Temperature Week 2: Aug 19-25, 2021

Slightly cooler to cooler than average surface air temperature will likely experience in most parts of the country except in Central Luzon where slightly warmer than average surface temperature is expected during the forecast period.